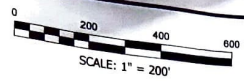


RYING

BURKESVILLE, KY 42717
 garthweaver@weaversurveying.com
 FAX: 270-864-3189
 JEREMY COOKSEY PLS #3947



GARETH WEAVER
 DEED BOOK 133 PAGE 175

MICHAEL PELTIER
 DEED BOOK 185 PAGE 424

TROY NORRIS
 DEED BOOK 143 PAGE 28
 PLAT CABINET 1 SLIDE 285
 TRACT #1

TROY NORRIS
 DEED BOOK 143 PAGE 28
 PLAT CABINET 1 SLIDE 285
 TRACT #2

KEVIN FORD
 DEED BOOK 182 PAGE 495

KEVIN FORD
 DEED BOOK 182 PAGE 495

TROY NORRIS
 DEED BOOK 107 PAGE 272

GARY CHAUVIN
 DEED BOOK 170 PAGE 303

GARY CHAUVIN
 DEED BOOK 159 PAGE 286
 PLAT CABINET 2 SLIDE 96A

220.063 ACRES +/-

LINE	BEARING	DISTANCE
L1	S 89°20'34" E	85.91
L2	S 25°20'29" W	160.49
L3	S 19°00'45" E	126.98
L4	S 89°08'25" E	126.98
L5	S 25°20'29" W	160.49
L6	S 89°20'34" E	85.91
L7	S 25°20'29" W	160.49
L8	S 19°00'45" E	126.98
L9	S 89°08'25" E	126.98
L10	S 25°20'29" W	160.49
L11	S 89°20'34" E	85.91
L12	S 25°20'29" W	160.49
L13	S 19°00'45" E	126.98
L14	S 89°08'25" E	126.98
L15	S 25°20'29" W	160.49
L16	S 89°20'34" E	85.91
L17	S 25°20'29" W	160.49
L18	S 19°00'45" E	126.98
L19	S 89°08'25" E	126.98
L20	S 25°20'29" W	160.49
L21	S 89°20'34" E	85.91
L22	S 25°20'29" W	160.49
L23	S 19°00'45" E	126.98
L24	S 89°08'25" E	126.98
L25	S 25°20'29" W	160.49
L26	S 89°20'34" E	85.91
L27	S 25°20'29" W	160.49
L28	S 19°00'45" E	126.98
L29	S 89°08'25" E	126.98
L30	S 25°20'29" W	160.49
L31	S 89°20'34" E	85.91
L32	S 25°20'29" W	160.49
L33	S 19°00'45" E	126.98
L34	S 89°08'25" E	126.98
L35	S 25°20'29" W	160.49
L36	S 89°20'34" E	85.91
L37	S 25°20'29" W	160.49
L38	S 19°00'45" E	126.98
L39	S 89°08'25" E	126.98
L40	S 25°20'29" W	160.49
L41	S 89°20'34" E	85.91
L42	S 25°20'29" W	160.49
L43	S 19°00'45" E	126.98
L44	S 89°08'25" E	126.98
L45	S 25°20'29" W	160.49
L46	S 89°20'34" E	85.91
L47	S 25°20'29" W	160.49
L48	S 19°00'45" E	126.98
L49	S 89°08'25" E	126.98
L50	S 25°20'29" W	160.49
L51	S 89°20'34" E	85.91
L52	S 25°20'29" W	160.49
L53	S 19°00'45" E	126.98
L54	S 89°08'25" E	126.98
L55	S 25°20'29" W	160.49
L56	S 89°20'34" E	85.91
L57	S 25°20'29" W	160.49
L58	S 19°00'45" E	126.98
L59	S 89°08'25" E	126.98
L60	S 25°20'29" W	160.49

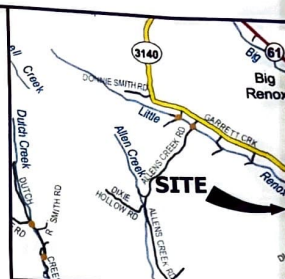
LINE	BEARING	DISTANCE
L61	N 70°51'31" W	174.89
L62	S 25°20'29" W	160.49
L63	S 19°00'45" E	126.98
L64	S 89°08'25" E	126.98
L65	S 25°20'29" W	160.49
L66	S 89°20'34" E	85.91
L67	S 25°20'29" W	160.49
L68	S 19°00'45" E	126.98
L69	S 89°08'25" E	126.98
L70	S 25°20'29" W	160.49
L71	S 89°20'34" E	85.91
L72	S 25°20'29" W	160.49
L73	S 19°00'45" E	126.98
L74	S 89°08'25" E	126.98
L75	S 25°20'29" W	160.49
L76	S 89°20'34" E	85.91
L77	S 25°20'29" W	160.49
L78	S 19°00'45" E	126.98
L79	S 89°08'25" E	126.98
L80	S 25°20'29" W	160.49
L81	S 89°20'34" E	85.91
L82	S 25°20'29" W	160.49
L83	S 19°00'45" E	126.98
L84	S 89°08'25" E	126.98
L85	S 25°20'29" W	160.49
L86	S 89°20'34" E	85.91
L87	S 25°20'29" W	160.49
L88	S 19°00'45" E	126.98
L89	S 89°08'25" E	126.98
L90	S 25°20'29" W	160.49
L91	S 89°20'34" E	85.91
L92	S 25°20'29" W	160.49
L93	S 19°00'45" E	126.98
L94	S 89°08'25" E	126.98
L95	S 25°20'29" W	160.49
L96	S 89°20'34" E	85.91
L97	S 25°20'29" W	160.49
L98	S 19°00'45" E	126.98
L99	S 89°08'25" E	126.98
L100	S 25°20'29" W	160.49

LINE	BEARING	DISTANCE
L101	N 70°51'31" W	174.89
L102	S 25°20'29" W	160.49
L103	S 19°00'45" E	126.98
L104	S 89°08'25" E	126.98
L105	S 25°20'29" W	160.49
L106	S 89°20'34" E	85.91
L107	S 25°20'29" W	160.49
L108	S 19°00'45" E	126.98
L109	S 89°08'25" E	126.98
L110	S 25°20'29" W	160.49
L111	S 89°20'34" E	85.91
L112	S 25°20'29" W	160.49
L113	S 19°00'45" E	126.98
L114	S 89°08'25" E	126.98
L115	S 25°20'29" W	160.49
L116	S 89°20'34" E	85.91
L117	S 25°20'29" W	160.49
L118	S 19°00'45" E	126.98
L119	S 89°08'25" E	126.98
L120	S 25°20'29" W	160.49
L121	S 89°20'34" E	85.91
L122	S 25°20'29" W	160.49
L123	S 19°00'45" E	126.98
L124	S 89°08'25" E	126.98
L125	S 25°20'29" W	160.49
L126	S 89°20'34" E	85.91
L127	S 25°20'29" W	160.49
L128	S 19°00'45" E	126.98
L129	S 89°08'25" E	126.98
L130	S 25°20'29" W	160.49
L131	S 89°20'34" E	85.91
L132	S 25°20'29" W	160.49
L133	S 19°00'45" E	126.98
L134	S 89°08'25" E	126.98
L135	S 25°20'29" W	160.49
L136	S 89°20'34" E	85.91
L137	S 25°20'29" W	160.49
L138	S 19°00'45" E	126.98
L139	S 89°08'25" E	126.98
L140	S 25°20'29" W	160.49

LINE	BEARING	DISTANCE
L141	N 70°51'31" W	174.89
L142	S 25°20'29" W	160.49
L143	S 19°00'45" E	126.98
L144	S 89°08'25" E	126.98
L145	S 25°20'29" W	160.49
L146	S 89°20'34" E	85.91
L147	S 25°20'29" W	160.49
L148	S 19°00'45" E	126.98
L149	S 89°08'25" E	126.98
L150	S 25°20'29" W	160.49
L151	S 89°20'34" E	85.91
L152	S 25°20'29" W	160.49
L153	S 19°00'45" E	126.98
L154	S 89°08'25" E	126.98
L155	S 25°20'29" W	160.49
L156	S 89°20'34" E	85.91
L157	S 25°20'29" W	160.49
L158	S 19°00'45" E	126.98
L159	S 89°08'25" E	126.98
L160	S 25°20'29" W	160.49
L161	S 89°20'34" E	85.91
L162	S 25°20'29" W	160.49
L163	S 19°00'45" E	126.98
L164	S 89°08'25" E	126.98
L165	S 25°20'29" W	160.49
L166	S 89°20'34" E	85.91
L167	S 25°20'29" W	160.49
L168	S 19°00'45" E	126.98
L169	S 89°08'25" E	126.98
L170	S 25°20'29" W	160.49

LINE	BEARING	DISTANCE
L171	N 70°51'31" W	174.89
L172	S 25°20'29" W	160.49
L173	S 19°00'45" E	126.98
L174	S 89°08'25" E	126.98
L175	S 25°20'29" W	160.49
L176	S 89°20'34" E	85.91
L177	S 25°20'29" W	160.49
L178	S 19°00'45" E	126.98
L179	S 89°08'25" E	126.98
L180	S 25°20'29" W	160.49
L181	S 89°20'34" E	85.91
L182	S 25°20'29" W	160.49
L183	S 19°00'45" E	126.98
L184	S 89°08'25" E	126.98
L185	S 25°20'29" W	160.49
L186	S 89°20'34" E	85.91
L187	S 25°20'29" W	160.49
L188	S 19°00'45" E	126.98
L189	S 89°08'25" E	126.98
L190	S 25°20'29" W	160.49
L191	S 89°20'34" E	85.91
L192	S 25°20'29" W	160.49
L193	S 19°00'45" E	126.98
L194	S 89°08'25" E	126.98
L195	S 25°20'29" W	160.49
L196	S 89°20'34" E	85.91
L197	S 25°20'29" W	160.49
L198	S 19°00'45" E	126.98
L199	S 89°08'25" E	126.98
L200	S 25°20'29" W	160.49

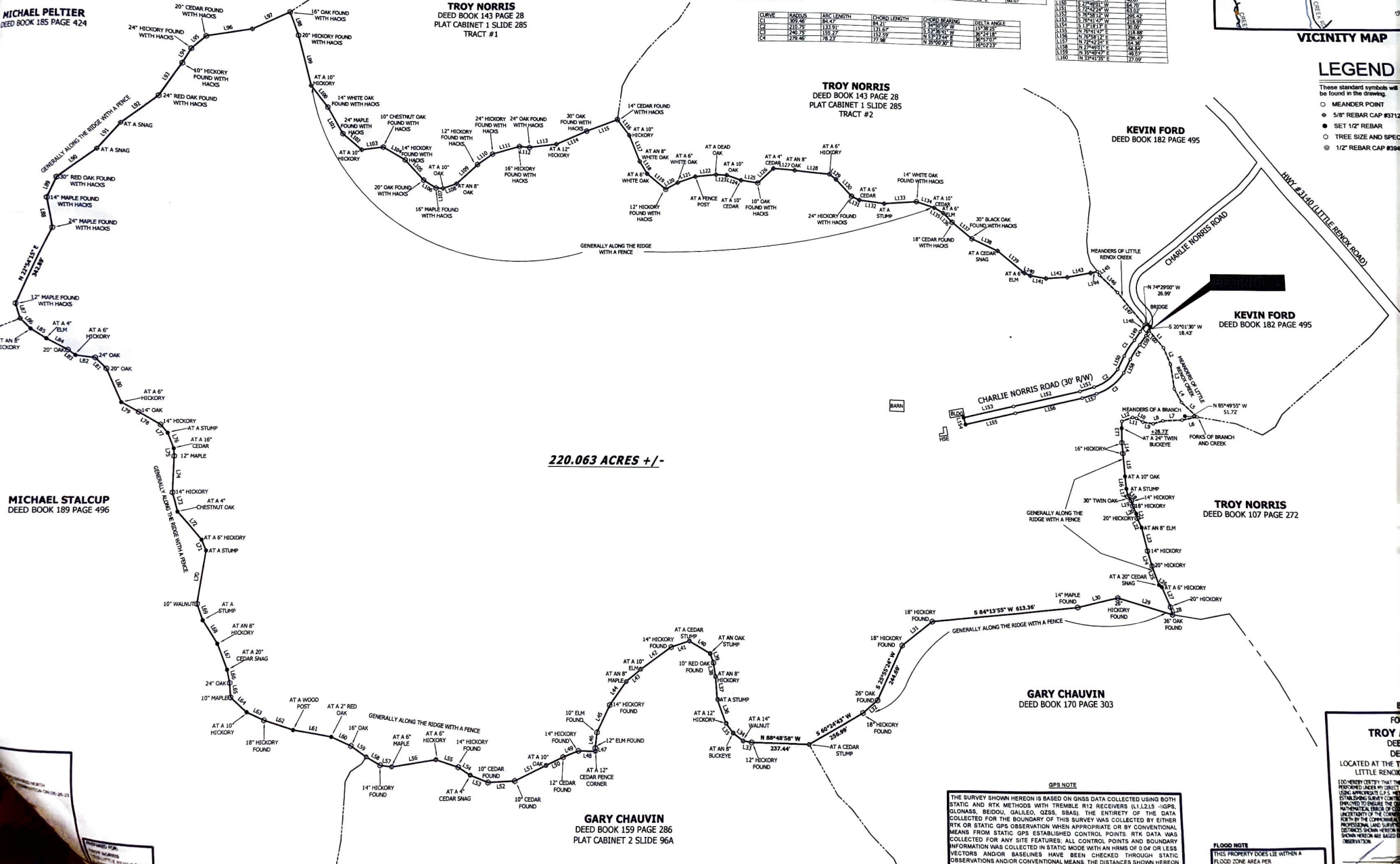
CURVE	RADIUS	ARC LENGTH	CHORD LENGTH	CHORD BEARING	DELTA ANGLE
C1	100.00	64.47	64.47	S 30°00'00" E	30.00
C2	210.25	133.51	111.62	N 59°59'59" E	30.00
C3	140.25	105.27	111.62	N 59°59'59" E	30.00
C4	225.50	138.12	132.97	N 59°59'59" E	18°02'22"



VICINITY MAP

LEGEND

- These standard symbols will be found in the drawing.
- MEANDER POINT
 - 5/8" REBAR CAP #3172
 - SET 1/2" REBAR
 - TREE SIZE AND SPECIES
 - 1/2" REBAR CAP #3947



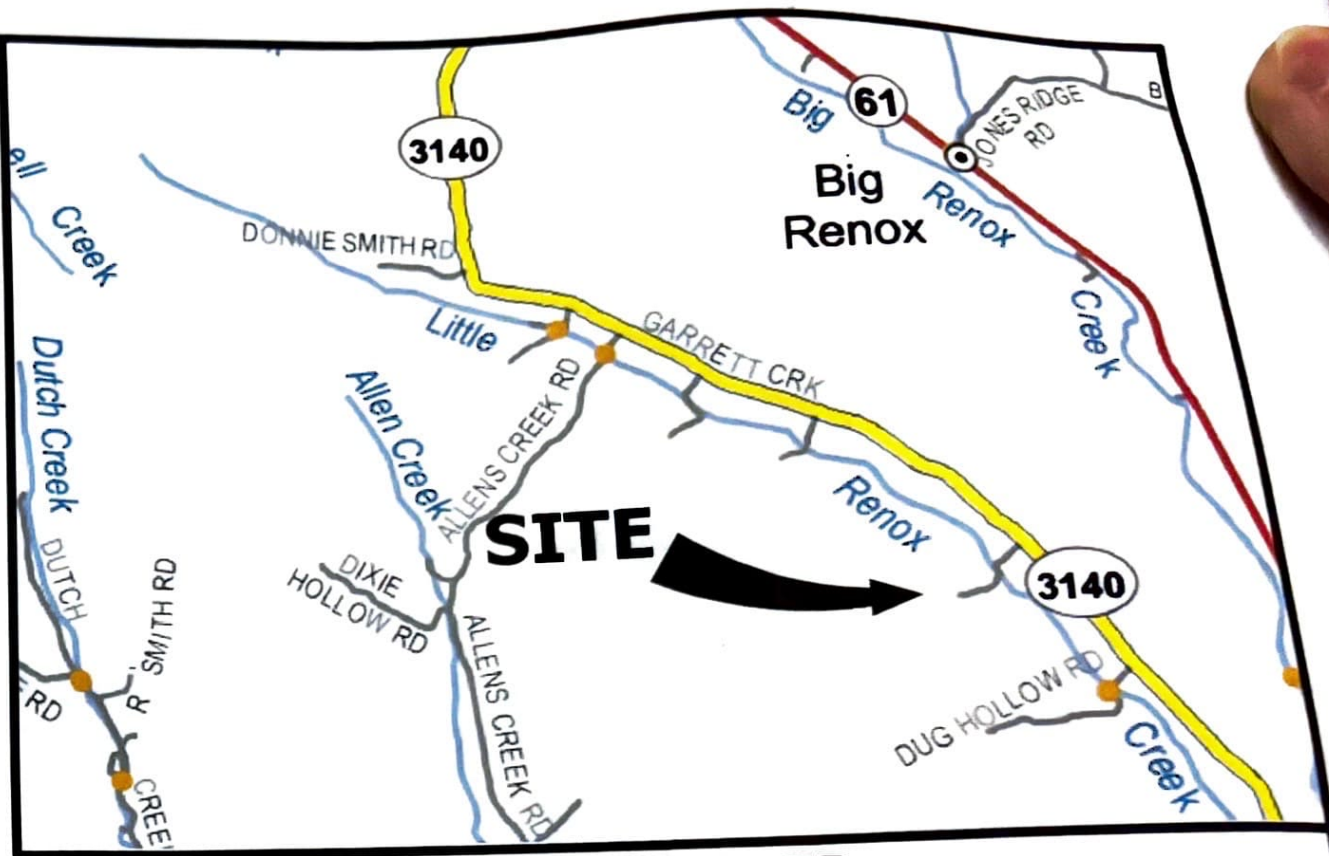
GPS NOTE

THE SURVEY SHOWN HEREON IS BASED ON GNSS DATA COLLECTED USING BOTH STATIC AND RTK METHODS WITH TREMBLE R12 RECEIVERS (L1, L2, L5) - GPS. STATIC AND RTK METHODS WITH TREMBLE R12 RECEIVERS (L1, L2, L5) - GPS. COLLECTED FOR THE BOUNDARY OF THIS SURVEY WAS COLLECTED BY EITHER RTK OR STATIC GPS OBSERVATION WHEN APPROPRIATE OR BY CONVENTIONAL MEANS FROM STATIC GPS ESTABLISHED CONTROL POINTS. RTK DATA WAS COLLECTED FOR ANY SITE FEATURES. ALL CONTROL POINTS AND BOUNDARY INFORMATION WAS COLLECTED IN STATIC MODE WITH AN IRMS OF 0.3M OR LESS. VECTORS AND/OR BASELINES HAVE BEEN CHECKED THROUGH STATIC OBSERVATIONS AND/OR CONVENTIONAL MEANS. THE DISTANCES SHOWN HEREON ARE BASED ON STATE PLANE COORDINATE SYSTEM. DISTANCES SHOWN HEREON ARE BASED ON STATE PLANE COORDINATE SYSTEM. DISTANCES SHOWN HEREON ARE BASED ON STATE PLANE COORDINATE SYSTEM.

FLOOD NOTE

THIS PROPERTY DOES NOT LIE WITHIN A FLOOD ZONE AREA PER FEDERAL RECORD DRAWING 1717-1418

FOR TROY A DEED LOCATED AT THE TR LITTLE RENOX, KY 42717. THIS PROPERTY DOES NOT LIE WITHIN A FLOOD ZONE AREA PER FEDERAL RECORD DRAWING 1717-1418.



VICINITY MAP

LEGEND

These standard symbols will be found in the drawing.

- MEANDER POINT
- ⊕ 5/8" REBAR CAP #3712 FOUND
- SET 1/2" REBAR
- ⊗ TREE SIZE AND SPECIES NOTED
- ⊙ 1/2" REBAR CAP #3947 FOUND